

GUIDE TO SB EXPRESS LANES ON I-10

BENEFITS

- Improve travel within I-10 corridor
- Relieve congestion and improve traffic flow on the regional transportation system
- Provide time savings and trip reliability for all who travel on I-10

PRICING

Toll pricing is dynamic and fluctuates based on traffic levels. Toll prices will be displayed on signs at each entry point within the corridor. The price you see at the point of entry is the price you will be charged.

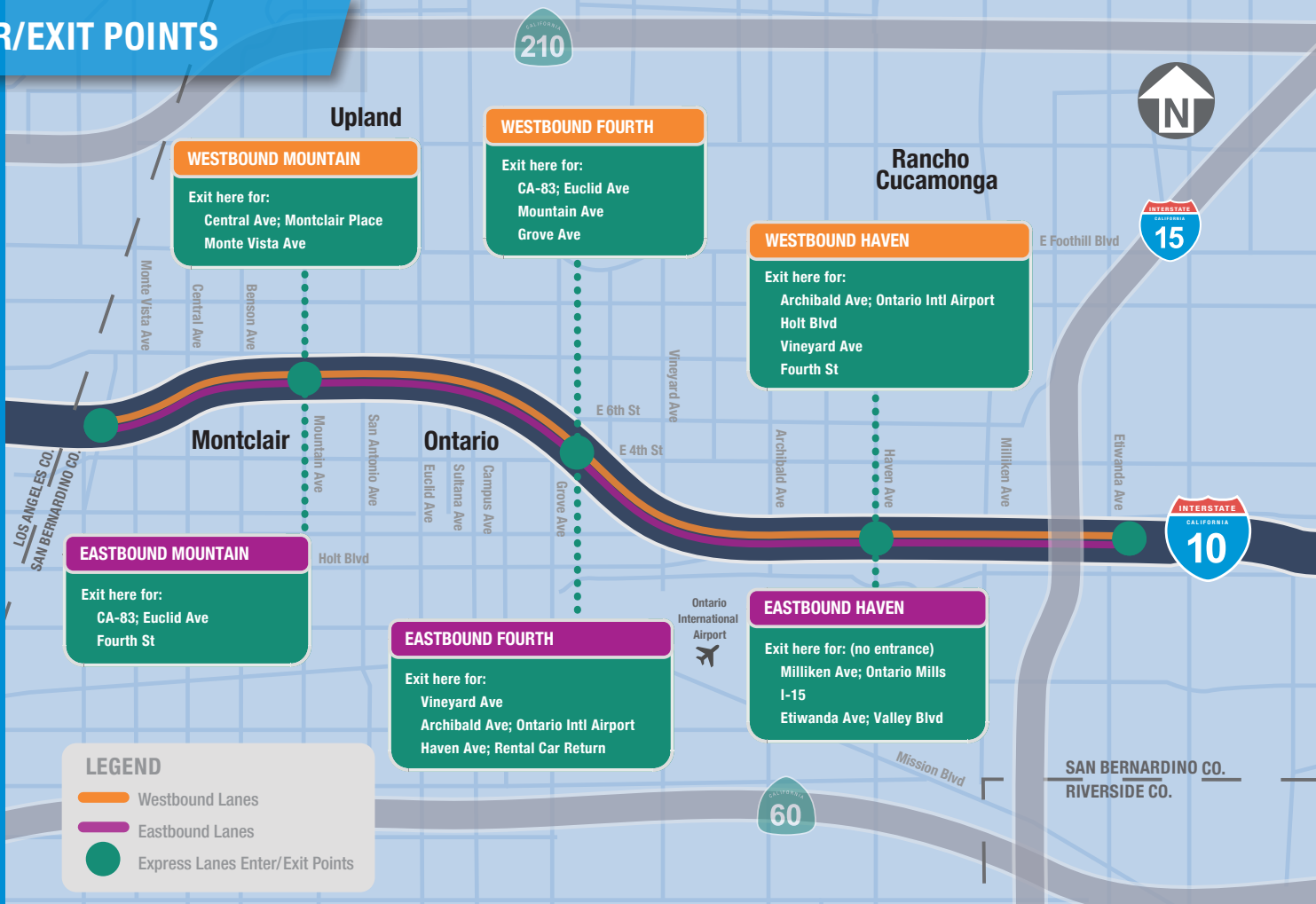


Pay tolls automatically from a pre-established, prepaid FasTrak® account that can be replenished using credit card, cash or check. FasTrak accountholders pay the lowest toll amount on I-10 and are eligible for discounted toll rates and programs.

HOW IT WORKS

The SB Express Lanes are two tolled lanes in each direction of I-10 between the I-15 Interchange and Los Angeles/San Bernardino County Line. Drivers can enter and exit the SB Express Lanes on I-10 from multiple points, providing sufficient opportunity to reach various destinations along the corridor. Entering and exiting the SB Express Lanes at points other than those indicated on the map below is illegal.

ENTER/EXIT POINTS



GUIDE TO SB EXPRESS LANES ON I-10

WAYS TO PAY



FASTRAK

Sign up for a FasTrak account by visiting SBExpressLanes.com. Before getting started, you will need:

- Contact information
- Vehicle make and model
- License plate number
- Credit/debit card information

If you have any existing FasTrak transponder and active account from any toll agency in California, there's nothing more needed to use the SB Express Lanes on I-10.

**See below to call over the phone or visit in-person.*

PAY ONLINE

No account? No problem. Visit SBExpressLanes.com/PayOnline within 5 days after your drive. Drivers can also opt to keep their credit card on file for up to 30 days to cover future trips on the SB Express Lanes on I-10.

VISIT US

You can call our customer service line at (909) 333-4791, M-F 8 a.m. - 6 p.m. and Sat. 9 a.m. to 2 p.m. Additionally, there are two walk-in centers to serve you:

- **San Bernardino County Customer Service Walk-In Center:**
Rancho Cucamonga City Hall, 10500 Civic Center Drive, Rancho Cucamonga, CA 91730
M-TH, 7 a.m. - 4:30 p.m.
- **The Toll Roads Irvine Customer Service Walk-In Center:**
125 Pacifica, Irvine, CA 92618
M-F, 7:30 a.m. - 5:30 p.m.

Drivers can also pay for tolls, replenish FasTrak accounts and resolve violations with cash at both walk-in centers and participating PayNearMe locations. Visit SBExpressLanes.com/PayCash to learn more.

DISCOUNT PROGRAMS

- **Carpool:** Travel on the SB Express Lanes on I-10 for free with three or more passengers. A FasTrak Flex[®] (switchable transponder) is required to identify the number of passengers in a vehicle.
- **Clean Air Vehicle (CAV):** Receive a 10 percent discount on the SB Express Lanes on I-10 with a CAV. A FasTrak account is required.
- **Low-Income Resident Benefit:** Qualifying San Bernardino County residents must first open a FasTrak account with The Toll Roads to receive a one-time credit which can be used for trips on the SB Express Lanes and/or a FasTrak Flex switchable transponder.
- **Disabled Veteran Benefit:** Qualifying disabled veterans must first open a FasTrak account with The Toll Roads to receive toll-free travel at all times on the SB Express Lanes.

Learn more about our programs and how to qualify at SBExpressLanes.com/Discounts.



The Toll Roads is the account and payment processing partner for the SB Express Lanes.



cta

San Bernardino County
Transportation Authority

SB Express Lanes is the brand name for the San Bernardino County Transportation Authority's (SBCTA) express lanes network.